



FIREINVENT

The very best fire safety products



Complete fire protection for your home and family

www.fireinvent.com



Every home is unique and demands its own fire safety solution. Such a solution does not have to be complicated. FireInvent offers the right solution for you through its Classic products as well as its line of Design products. Both product lines fulfill the highest fire safety quality standards.

Our products make it easy for you to protect your home against a domestic fire. You should, however, also consider the importance of fire protection in your second home, car, boat, caravan, and whenever you are traveling.

For your convenience, we combined each of the essential fire safety products in one practical Fire Safety Box. The Fire Safety Box comes in a Classic edition as well as a Design edition, with designer fire safety products that are elegant and decorative. In this brochure we will show you how to best protect your home against a domestic fire. Keep the brochure for future reference. If you have further questions about fire safety, please visit our website at: **www.fireinvent.com**



**We are passionate
about your fire safety**

Our FireInvent products are the result of many years of experience in fire fighting.

We know that in order to increase the use and efficiency of fire safety products, thinking outside the box, as well as having a design focus are essential. FireInvent's range of products is as elegant as it is



decorative – allowing FireInvent products to be in your reach when you need them.

Our goal is to provide the most attractive and decorative range of fire safety products. Our product philosophy is based on the Scandinavian way of thinking: creating desirability through the integration of design and functionality.

+1**+2****+3**

3 out of 4 fire incidents occur at home. Besides cooking accidents, the leading causes for domestic fires are malfunctioning of electrical equipment and wiring, candles and smoking. Most domestic fires occur when someone is at home and could limit the damage caused by the fire*.

How good is the fire protection in your home? Make a demand analysis on our webpage at: www.fireinvent.com.

**Source: Fires in the Home, Office of the Deputy Prime Minister*

In case of a fire emergency you must call 112 or 999 (in the UK)! If the fire is too consuming evacuate the house first and then call 112 or 999 (in the UK).

+1 Smoke detector to detect the fire

A smoke detector can detect the poisonous smoke before you and your family can. You should have one or more smoke detectors in every room, hallway and staircase.

+2 Fire blanket to put out small fires

Most fires start small. A fire blanket should always be ready at hand.

+3 Fire extinguisher to put out the fire

A fire extinguisher can stop a fire before it gets out of control.

= Complete Fire Safety

If possible, close all doors and windows, leave the building and the premises. Do not take any risks. A fire can spread very quickly.

This is how a fire develops



If you know how fires can develop, the chance of protecting yourself and your family increases significantly.

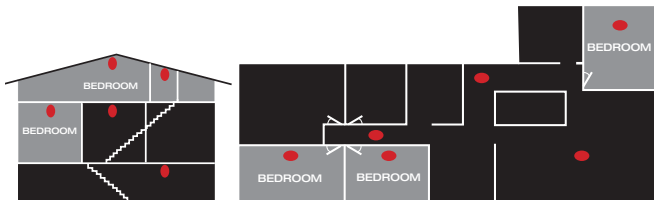
- A fire's poisonous smoke is often more dangerous than the flames itself. The smoke rises up and fills a room from top to bottom.
- If the door to the room is closed, the smoke will fill the entire room before the smoke pours out to the next room.



If the door is open, the poisonous smoke will spread along the ceiling into the remaining rooms, and will fill all rooms simultaneously from the ceiling to the floor.

- Being warned in time can make the difference between a small fire and a catastrophic fire incident. For your best protection you should have one or more smoke detectors in every room, hallway and staircase.
- Most fires start small and can be put out with a fire blanket or a fire extinguisher.

If you are woken up by a smoke detector you should feel confident that you placed them in the right locations within your home. You should also feel confident that your smoke detectors warned you in time to prevent the fire from spreading further than absolutely necessary. With the right fire protection you can sleep with peace of mind. You can find further information about fire safety on our website at: www.fireinvent.com



Smoke detectors - this is why they are so effective!



In most cases smoke detectors discover the poisonous smoke of a domestic fire before you and your family do. The smoke detector brings the fire to your attention and gives you the chance to put it out before it spreads any further.

For optimum protection you should have at least one smoke detector in every room, staircase, and hallway. Using several smoke detectors in your home increases your chance of detecting the fire early and enables you to act promptly.

Place the smoke detector in a high up and, if possible, central location within the room. In many cases a classic smoke detector will do just fine. In a more decorated and designed room FireInvent's Snapalarm is the perfect choice.

The Snapalarm beautifully blends in with your lamp and keeps your ceiling free from obstructions and holes. It simply snaps onto the cord, chain or rod of your lamp, without the need to use any tools.



Fire blankets take care of smaller fires



A fire blanket makes it easy to put out a fire – no matter if it is a burning candleholder, clothes, or a frying pan when you are cooking. Most family members can easily and effectively use a fire blanket to put out a fire. For the best protection, you should have several fire blankets throughout your home. FireInvent took special care to ensure that our products are decorative. That allows you to keep the fire blankets where you can see and use them most quickly. FireInvent offers fire blankets with a design cover, and a flame resistant blanket that is so soft and warm that it is perfect to use as a ‘regular’ blanket on any sofa, chair, or bed.

This is how you should use a fire blanket: grab the blanket by its straps or end, hold the blanket in front of you, and put it down over the fire, entirely covering the burning material. Make sure that whatever is burning is covered completely – so that the fire will be suffocated by cutting off the oxygen supply.

Fire extinguishers to put out open fires



You will need a fire extinguisher if the fire is too large to be covered with your fire blanket. FireInvent recommends a 6kg powder fire extinguisher for your home, supplemented by several 2kg fire extinguishers. The 2kg fire extinguishers are particularly attractive and can be moved around quickly, making them very effective and easy to display.

This is how you use a fire extinguisher: remove the safety device and aim the nozzle at the base of the flames. Press the handle down and put out the fire by using sweeping movements over the base of the fire.

Remember! If it is not possible to put out the fire with one of your fire safety products, you must leave the premises immediately. In some homes, fire safety is increased by having and using an escape ladder. You should also have a fire emergency escape plan for your home. Make sure everyone knows and understands the escape plan.

The prevention of a domestic fire has as much to do with being knowledgeable about fire safety as well as having the right equipment.

A wide range of safe and attractive products



FireInvent's mission is to increase fire safety in all homes. We offer the full spectrum of fire safety products that are designed to truly integrate into your home. The design and function of our products are continuously monitored and improved to ensure that they are as attractive and easy to use as possible.



+1 Smoke detectors

To discover a fire early, FireInvent offers classic smoke detectors that are mounted to the ceiling. Furthermore, we offer Snapalarm – a new, attractive and innovative smoke alarm that is easily installed onto any lamp cable, chain or rod in your home, without the use of any tools. Snapalarm is the winner of the RedDot Design award. In our range you can also find gas and water alarms.

+2 Fire blankets

Put the fire out with your fire blanket. The fire blanket is an excellent fire fighting tool for any small fire, such as when someone's clothes are burning. FireInvent offers fire blankets with decorative designer covers, and "Sofie" the flame resistant blanket that is





wonderfully soft, comfortable and warm. "Sofie" is perfect to use as a 'regular' blanket on every sofa, chair, or bed.

+3 Fire extinguishers

It is important to react fast in the case of a fire emergency. FireInvent's 2kg and 6 kg ABC powder fire extinguishers are available with the highest effect class, and can be used for all fires: firm materials, liquid, gas, as well as electric fires. The wall mounting device is included.

FireInvent's 6 liter foam fire extinguisher has the highest effect class and is used for firm materials and liquid fires.





Classic

Design white

Design black

Exclusive

1+2+3 Complete Fire Safety

The Fire Safety Box is fire protection in one attractive box that is easy to carry home. The box comes in four different versions and entails a smoke alarm, a fire blanket and a powder fire extinguisher. The FireInvent Fire Safety Box is a thoughtful and considerate gift for every birthday, Christmas and wedding, as well as for any house warming party!



An Emergency Flash Light is included in the Classic and Exclusive Fire Safety Box. It has LED lights, is water resistant, and is charged manually. Furthermore, the Emergency Flash Light can charge up your mobile phone battery.

Do not forget to also consider the fire safety of your country house, car, boat and on your vacation.



FIREINVENT

The very best fire safety products

Secure your home and protect the ones you love with Complete Fire Protection. FireInvent offers this Complete Fire Protection through bringing Scandinavian design and innovation to fire safety.

www.fireinvent.com